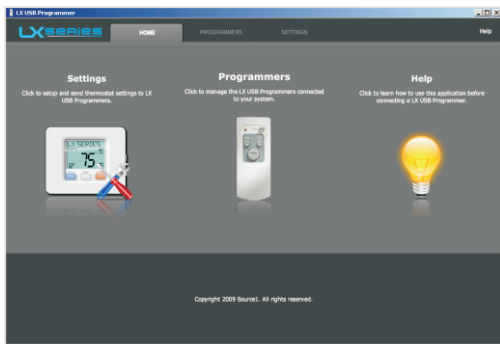


Be sure to have the LX USB Programmer application installed on your computer before proceeding. Follow the installation instructions below if you have not already installed the program.

Installation: Insert the bundled Mini CD into your computer to begin the installation. On computers running the Windows operating system, a welcome window will appear with an option to begin the installation process. If your system is set to disallow CD auto-run you will not see the welcome window and you must launch the installer manually by browsing the CD contents in “My Computer”. If your system is not physically compatible with the bundled mini cd you may download the program for the operating system of your choice from the following website: <http://www.source1thermostats.com/downloadapp.html>

- For Mac computers, download and run [lxusb_osx_setup.pkg](#)
- For Windows computers, download and run [lxusb_win_setup.exe](#)

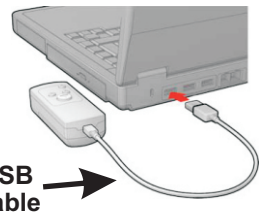
1. Launch the installed program:



2. Connect the USB Programmer to one of your computer's USB ports using the included USB cable as shown here:

The program should automatically recognize your connected programmer and list it under the “Programmers” tab.

NOTE: When the programmer is first connected, a drive window will pop up on your computer screen. You may close this drive window when it appears.



3. Program thermostat settings:

Click on the “Settings” tab to setup and send Thermostat settings to the USB Programmer. (Follow instructions in the LX USB Programmer application for programming help.)

Important: The two supplied AA batteries must be installed in the USB Programmer for proper operation.

4. Uploading settings and text to the thermostat:

After the USB Programmer has been safely ejected, disconnect from the USB cable and follow the instructions below.

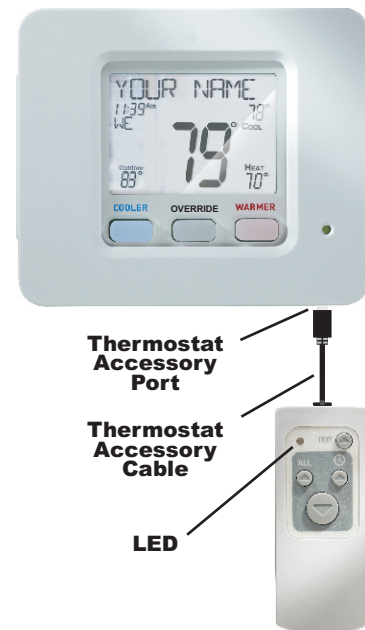
(A) Connect the USB Programmer to the Thermostat Accessory Port using the Thermostat Accessory Cable as shown:

The LED will flash red a number of times based on the model of the thermostat it recognizes.

- 1 Flash = S1-TBSU22HN
- 2 Flashes = S1-TBSU32P7
- 3 Flashes = S1-TBSU32HP7
- 4 Flashes = S1-THSU21P1
- 5 Flashes = S1-THSU32P7
- 6 Flashes = S1-THSU32HP7

The LED will turn red during operation and flash green briefly when finished.

Reconnect if the red/green LED does not light or flash at all.



(Cont.) →

4. Uploading settings and text to the thermostat (cont.):

(B) After the USB Programmer has been properly connected and recognized by the thermostat, choose from the following options:

- **Upload text only:**

Press the Upload Text button to upload service information and thermostat messages to the thermostat. Only text will be copied to the thermostat when this button is pressed.

This is the only button that will upload text.

- **Upload time only:**

Press the Upload Clock button to upload time and day information to the thermostat. Only the time and day will be copied to the thermostat when this button is pressed.

- **Upload all settings:**

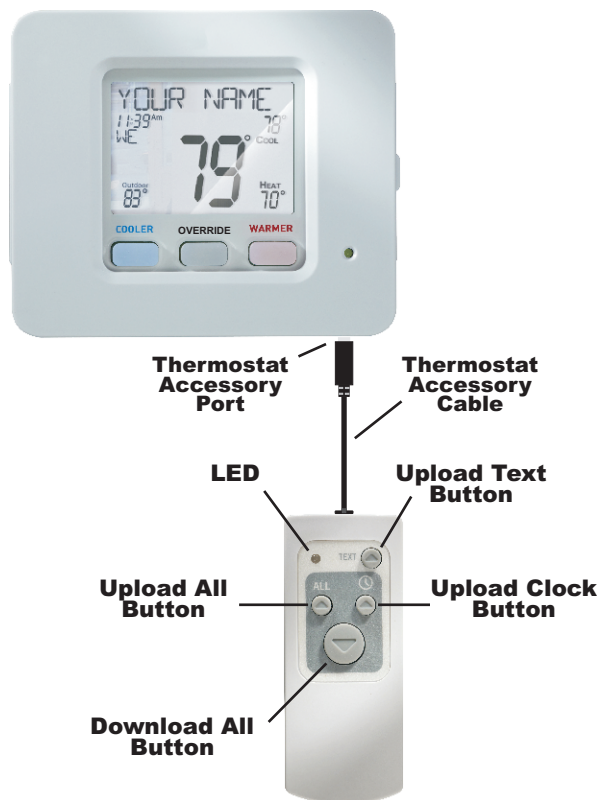
Press the Upload All button to upload time and day *and* all information listed in the **Data Transfer Table** below, to the thermostat.

This button will not upload text.

- **Download all settings:**

Press the Download All button to copy time and day *and* all information listed in the **Data Transfer Table** below, to the USB Programmer. This function may be used to copy data from one thermostat to another.

This button will not download text.



Important: Do not disconnect the USB Programmer from the thermostat during data transmission.

Upload All and Download All Buttons:

Data Transfer Table, by Thermostat Model

Description	S1-TBSU22HN	S1-TBSU32P7	S1-TBSU32HP7	S1-THSU21P1	S1-THSU32P7	S1-THSU32HP7
Time of day		●	●	●	●	●
Day of week		●	●	●	●	●
F or C readout	●	●	●	●	●	●
Cycles per hour	●	●	●	●	●	●
Compressor minimum off minutes	●	●	●	●	●	●
Scrolling method	●	●	●	●	●	●
Language	●	●	●	●	●	●
Control temp source	●	●	●	●	●	●
Security level	●	●	●	●	●	●
Aux Heat lockout temp						●
Setpoint limits	●	●	●	●	●	●
Program mode			●	●	●	●
Available modes	●	●	●	●	●	●
Time schedule		●	●	●	●	●
Backlight	●	●	●	●	●	●
Minimum Heat/Cool setpoint difference	●	●	●	●	●	●
Service Alerts	●	●	●	●	●	●
Filter runtime set	●	●	●	●	●	●
UV runtime set	●	●	●	●	●	●
Humidity runtime set	●	●	●	●	●	●
Deadband Settings		●	●	●	●	●
Fan off delay		●	●	●	●	●
Preoccupancy purge			●			
Programmable Fan					●	●
Fan on w/Hum	●		●			●
Cool to Dehum	●		●			●
Max Dehum Overcool	●		●			●
Reheat w/Cool to Dehum			●			●

Note:

The current Mode and Setpoints will not be changed by the LX USB Programmer.

Vacation and Holiday settings will not be changed by the LX USB Programmer.

Text cannot be downloaded into or removed from the thermostat by the LX USB Programmer. The LX USB Programmer computer application must be used to change or reset text messages. Text messages may also be removed by resetting the thermostat back to factory default settings.

LED Codes

Solid RED and/or 4 Flashes GREEN = Data has been sent successfully. **NOTE:** Even if data has been sent from the USB Programmer, the thermostat will not accept data programmed for a different model thermostat.

2 Flashes RED = USB Programmer not programmed.

Remedy: Use the LX USB Programmer Application Software to program the USB Programmer.

5 Flashes RED = All data has not been sent successfully.

Remedy: Check cable connections and resend data.

LED Not Lit when connected to thermostat = Batteries dead or not installed.

Remedy: Check/install new batteries.